

Florida's Approach to Performance Management

presented to

New York State
Association of
Metropolitan Planning
Organizations

presented by

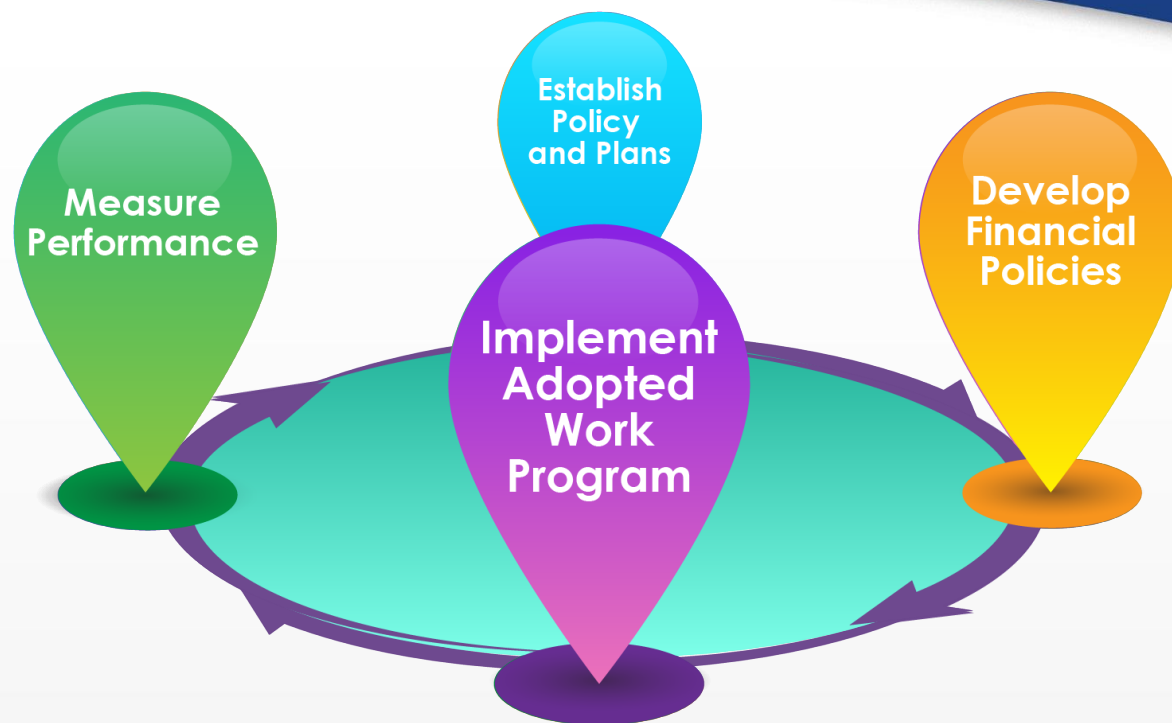
Carmen Monroy
Florida DOT

Carl Mikyska
Florida MPO Advisory Council



June 21, 2017

Framework for Investment Decisions



2016 Performance Report



Florida Department of Transportation

2016 Performance Report



Safety

Preservation

Mobility

Economy

Environment

Connecting the FTP and Performance Report



Safety and Security



Agile, Resilient & Quality Infrastructure



Efficient and Reliable Mobility



More Transportation Choices



Economic Competitiveness



Quality Places



Environment and Energy

2016 Performance Summit



Opening
(May 10)

Brian Blanchard

Assistant Secretary FDOT



Jim Wood

State Transportation Planning Administrator

Mobility
(May 10)

Beth Alden

Hillsborough MPO



Brad Thoburn

Jacksonville Transportation Authority



Michael Stewart

Jacksonville Aviation Authority



Economy
(May 11)

Mark Bontrager

Space Florida



Tisha Keller

Florida Trucking Association



Natacha Yacinthe

Port Everglades



Preservation
(May 11)

James Cromar

Broward MPO



Jim Warren

Asphalt Contractors Association



Chris Cochran

Pinellas Suncoast Transit Authority



Environment
May 12)

Chris Stahl Department of
Environmental Protection



Sam Poole

Urban Land Institute



Julie Dudley

FL Department of Health



Safety
(May 12)

James Hightower Department
Highway Safety and Motor Vehicles



Steve Myers

Lee Tran



Don Scott

Lee MPO



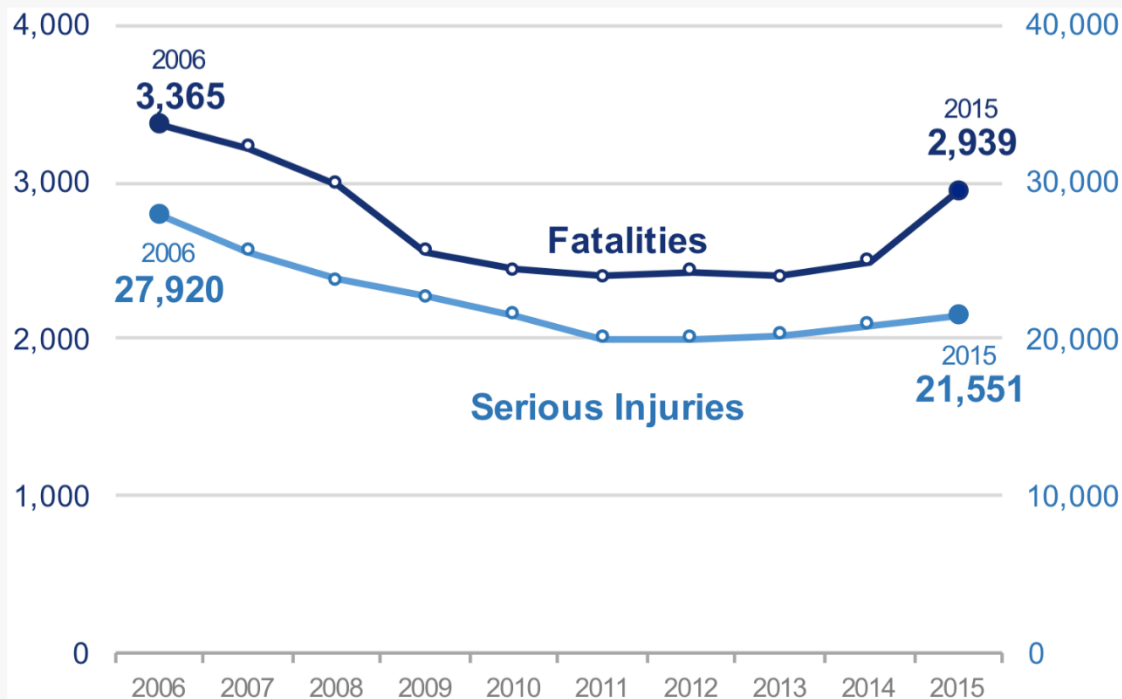
Safety



PERFORMANCE \ SAFETY \ Fatalities and Serious Injuries

Fatalities and Serious Injuries continue to increase.

Between 2014 and 2015 fatalities increased 17.8% and serious injuries by 3.1%



Safety and Security: Looking to the Future



- **Additional safety measures for non-highway modes**
- **Transportation security measures**
 - » Potential risks
 - » Effectiveness of security initiatives including impacts on mobility
- **Emergency preparedness, response and recovery measures**

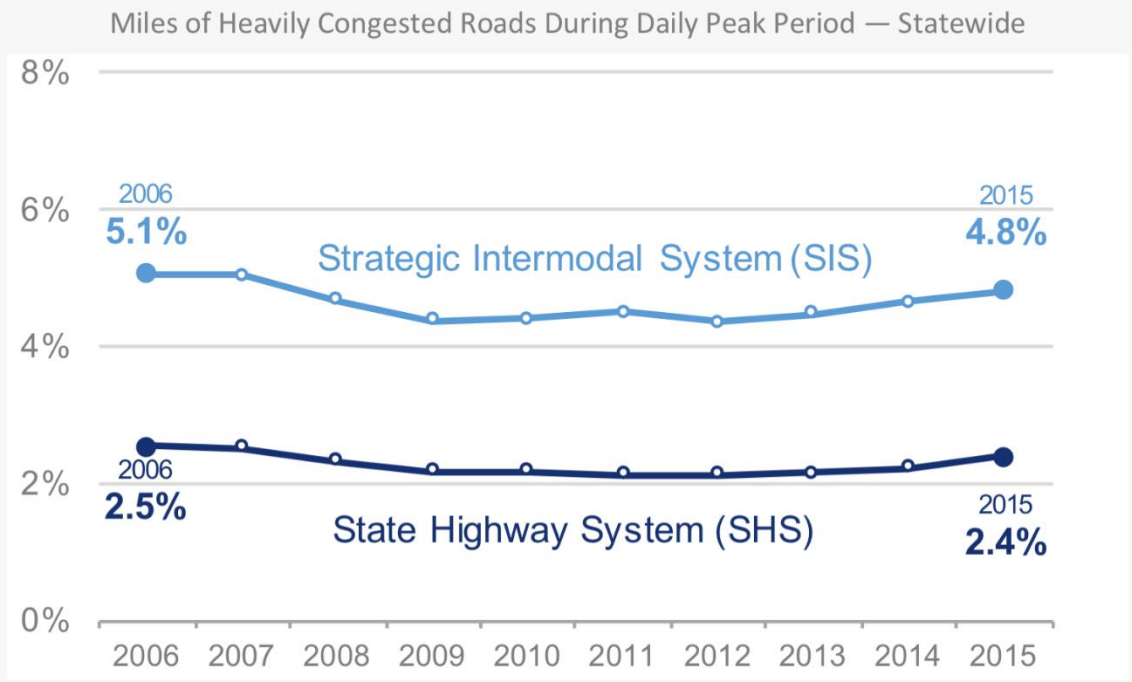
Mobility



PERFORMANCE \ MOBILITY \ Utilization – Congestion

The percentage of heavily congested roads has been fairly level over the past decade.

Recent increases speak to the importance of increasing system capacity, improving operating efficiency, and providing transportation choices.



Mobility and Choices: Looking to the Future



- **Multimodal measures emphasizing**
 - » Efficiency
 - » Reliability
 - » Accessibility
 - » Connectivity
- **Measures of modal connectivity**
 - » First/last mile
 - » Integration of scheduling, payment, data, etc.
- **Differentiation of measures by type of trips supported**
 - » State, regional, local
- **Better measures on freight/supply chain**

Florida Performance Measures Workshops



FDOT • FHWA • FTA • MPO STATEWIDE MEETING



Collaboration Workshop MAP-21 Performance Measures

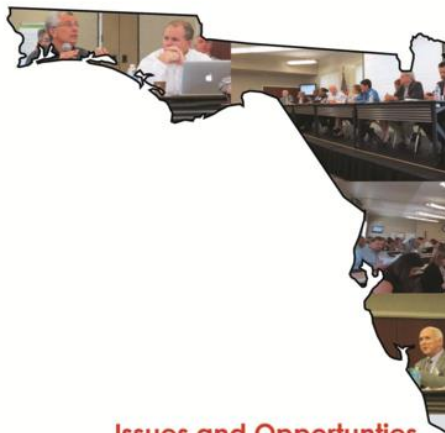
April 3, 2014



FDOT • FHWA • FTA • MPO STATEWIDE MEETING



Collaboration Workshop Performance Measures



Issues and Opportunities
April 15, 2015



FDOT • FHWA • FTA • MPO STATEWIDE MEETING



FLORIDA METROPOLITAN PLANNING PARTNERSHIP STATEWIDE MEETING

SEPTEMBER 27 & 28, 2016

Collaboration Workshop Performance Measures 2016



Purpose of MPO Pilot



Add data for 4 MPOs to FDOT statewide annual 'National Measures' report for Florida Congressional Delegation:

Part of FDOT's efforts to collaborate on PM with state's MPOs

Review MPO-level performance results for FHWA measures

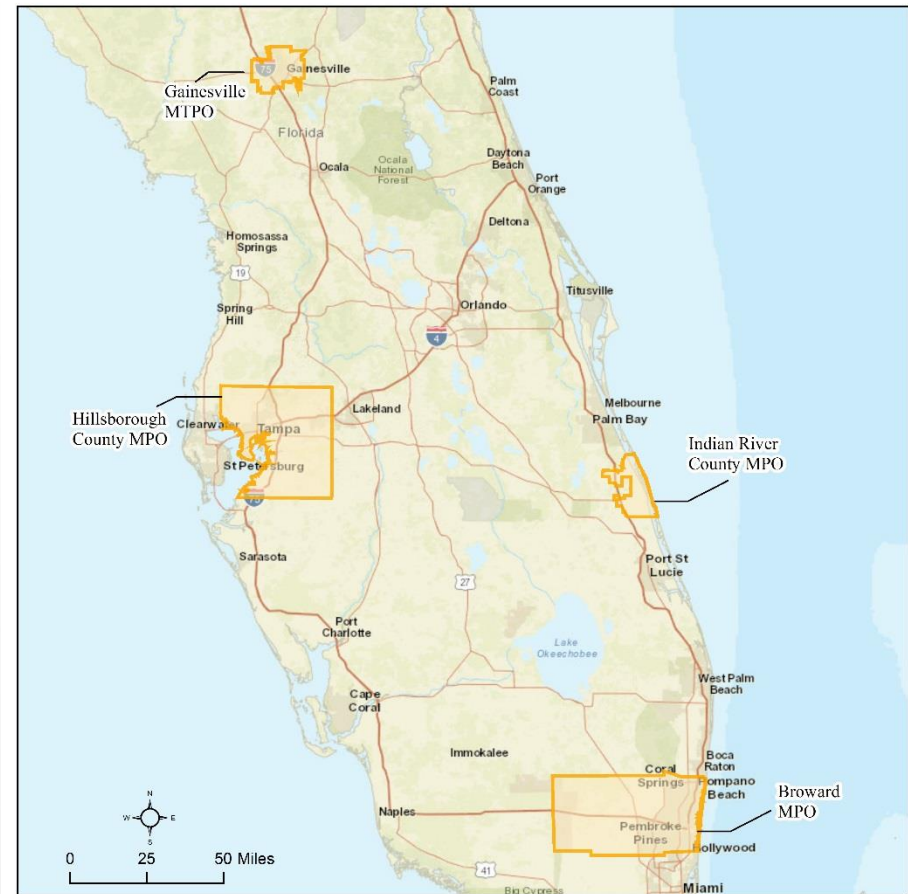
Compare statewide trends to MPO level patterns

Not intended to set targets; but consider implications for target setting

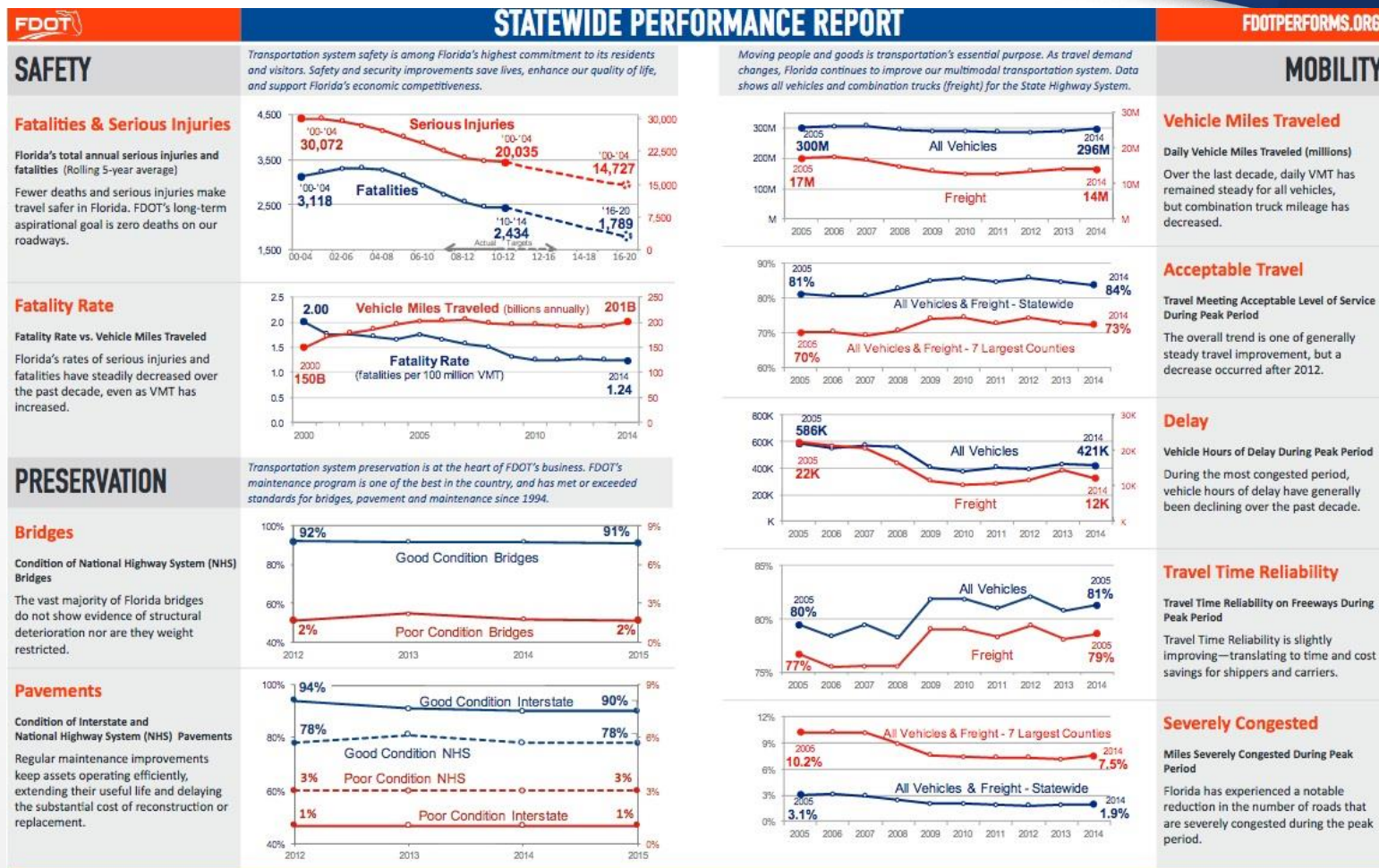
Give MPOs the ability to tell the story of transportation

MPO Pilots

- Federal funds
- Total transportation budget
- Policy of maintenance first



FDOT's MAP-21 Measures Report



FDOTPERFORMS.ORG

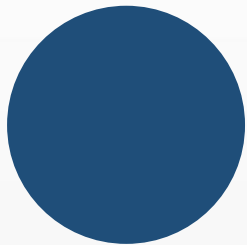
OFFICE OF POLICY PLANNING CONTACT: DAVID LEE (850) 414-4802

Daily Vehicle Miles Traveled in Pilot MPOs

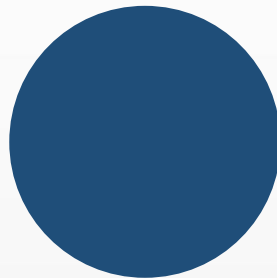


(2015 State Highway System Vehicle Miles Traveled by MPO/TPO Boundary)

Hillsborough Broward Gainesville Indian River



21 Million VMT
4% large trucks



27 Million VMT
4% large trucks



2.7 Million VMT
5% large trucks

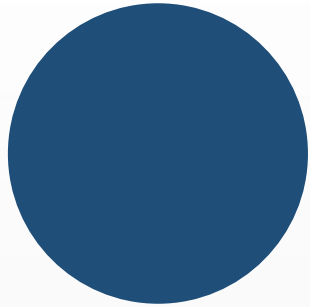


1.6 Million VMT
4% large trucks

Pilot MPOs – NHS Bridges

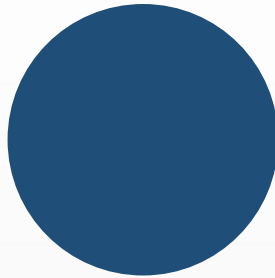


Hillsborough



479

Broward



391

(# of NHS bridges by MPO boundary)

Gainesville



46

Indian River



42



9.7M



12.5M



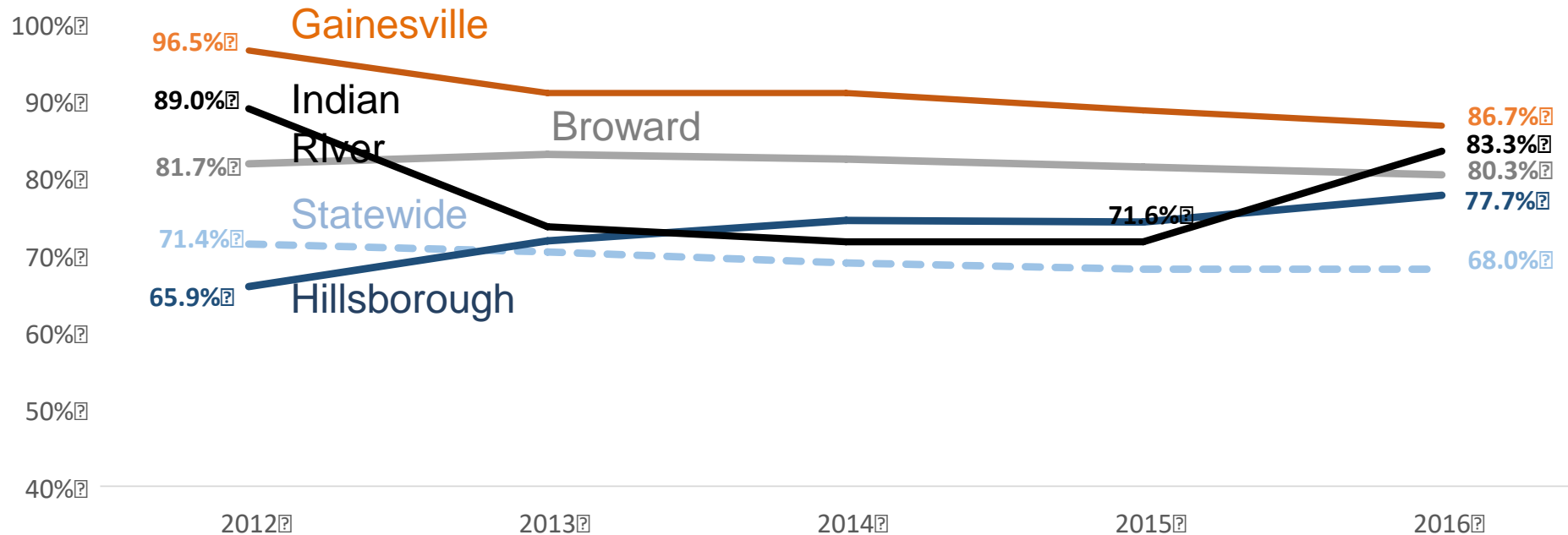
0.5M



0.35M

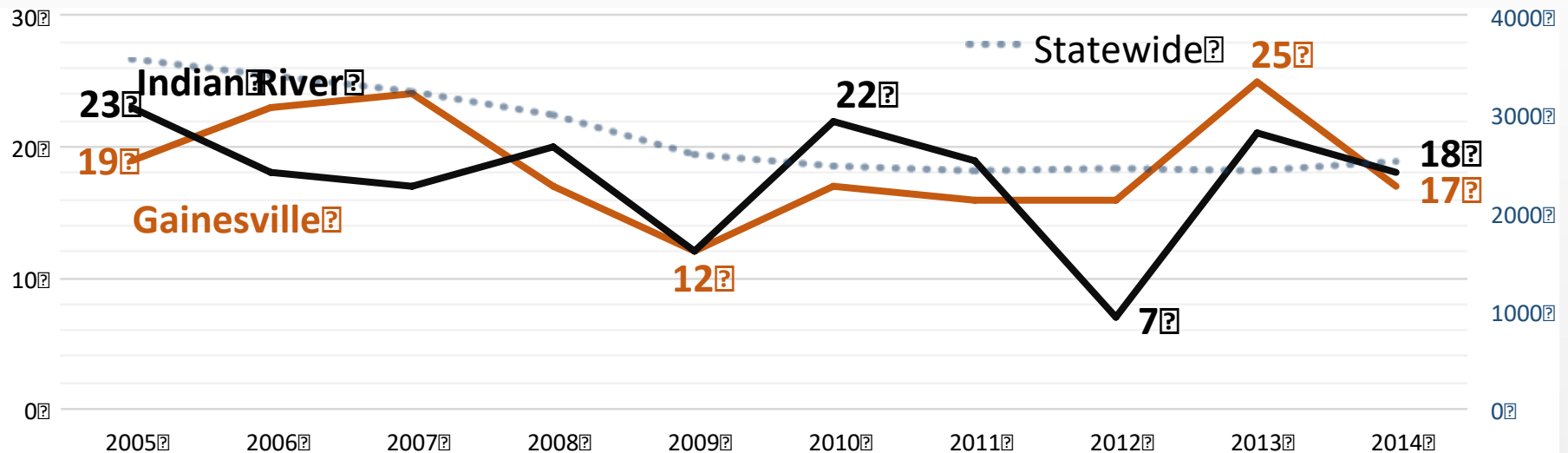
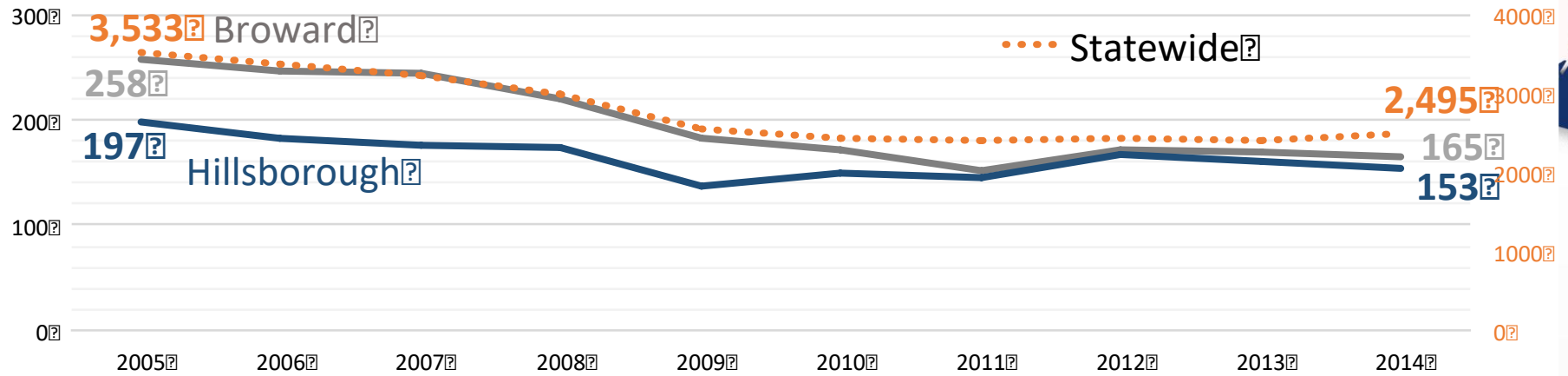
(Square footage of NHS bridge deck area by MPO boundary)

NHS Bridge Deck Area in Good Condition



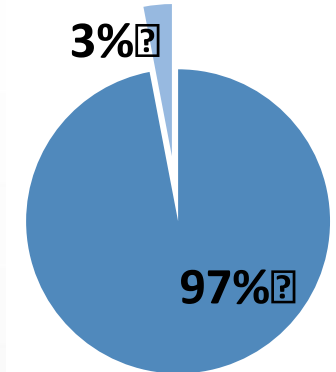
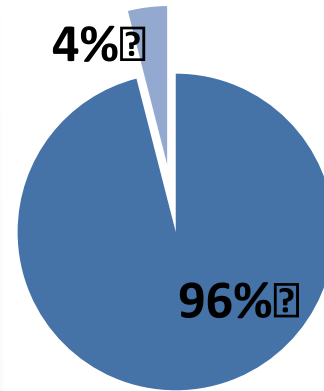
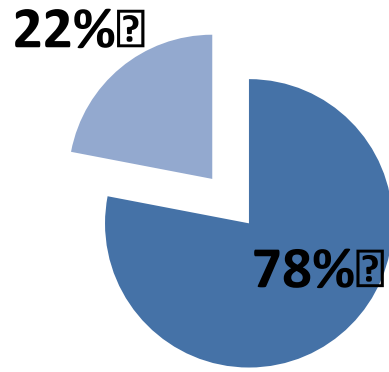
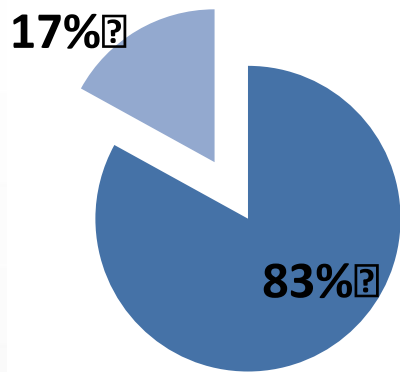
Total Fatalities (Year-by-Year)

(All Public Roads)



Peak Hour Travel Reliability

(Freeways Inside MPO Boundary)



Hillsborough

Broward

Gainesville

Indian River



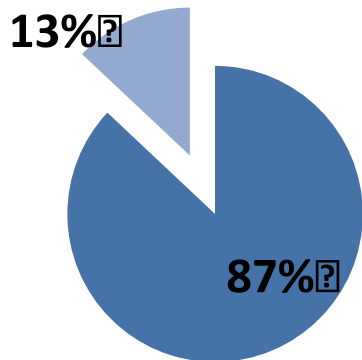
Unreliable travel during peak hour

For seven largest counties travel time reliability is defined as the percentage of freeway trips traveling at least 45 mph.

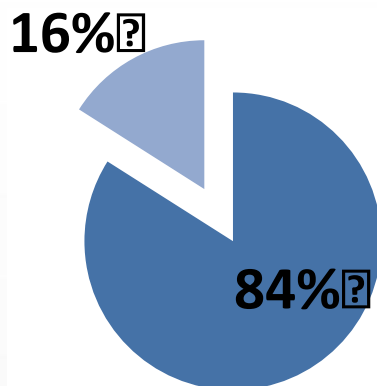
For all others travel time reliability is defined as the percentage of freeway trips travelling at greater than or equal to 5 mph below the posted speed limit.

Peak Hour Truck Travel Reliability

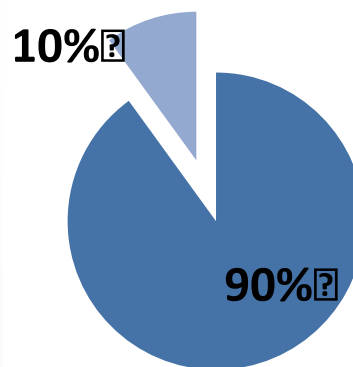
(Freeways Inside MPO Boundary)



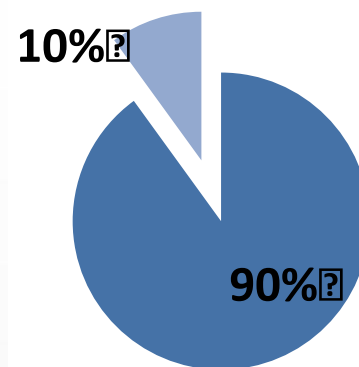
Hillsborough



Broward



Gainesville



Indian River

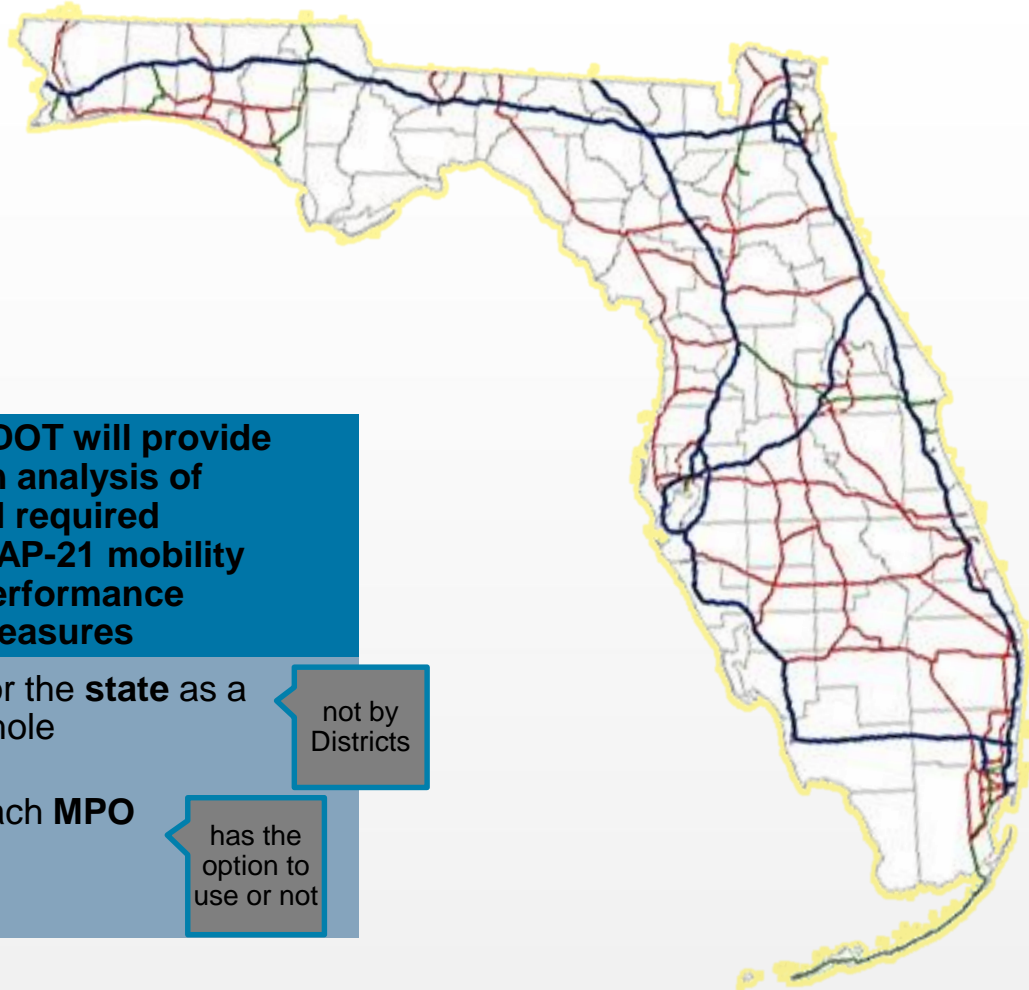
■ Unreliable travel during peak hour

For seven largest counties travel time reliability is defined as the percentage of freeway trips traveling at least 45 mph.

For all others travel time reliability is defined as the percentage of freeway trips travelling at greater than or equal to 5 mph below the posted speed limit.

Collaborative Approach

from 2015 Statewide MMPM Team / District/MPO Workshops



FDOT will provide an analysis of all required MAP-21 mobility performance measures

- For the **state** as a whole

not by Districts

- Each **MPO**

has the option to use or not

Comparable measurements for road networks

- MAP-21 networks
- State Highway System

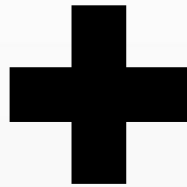
Areawide groupings

- Urbanized boundaries
- Planning boundaries
- County boundaries
- Regional boundaries

Collaborative Approach



FDOT will calculate
and supply **all**
federally required
measures to each
MPO

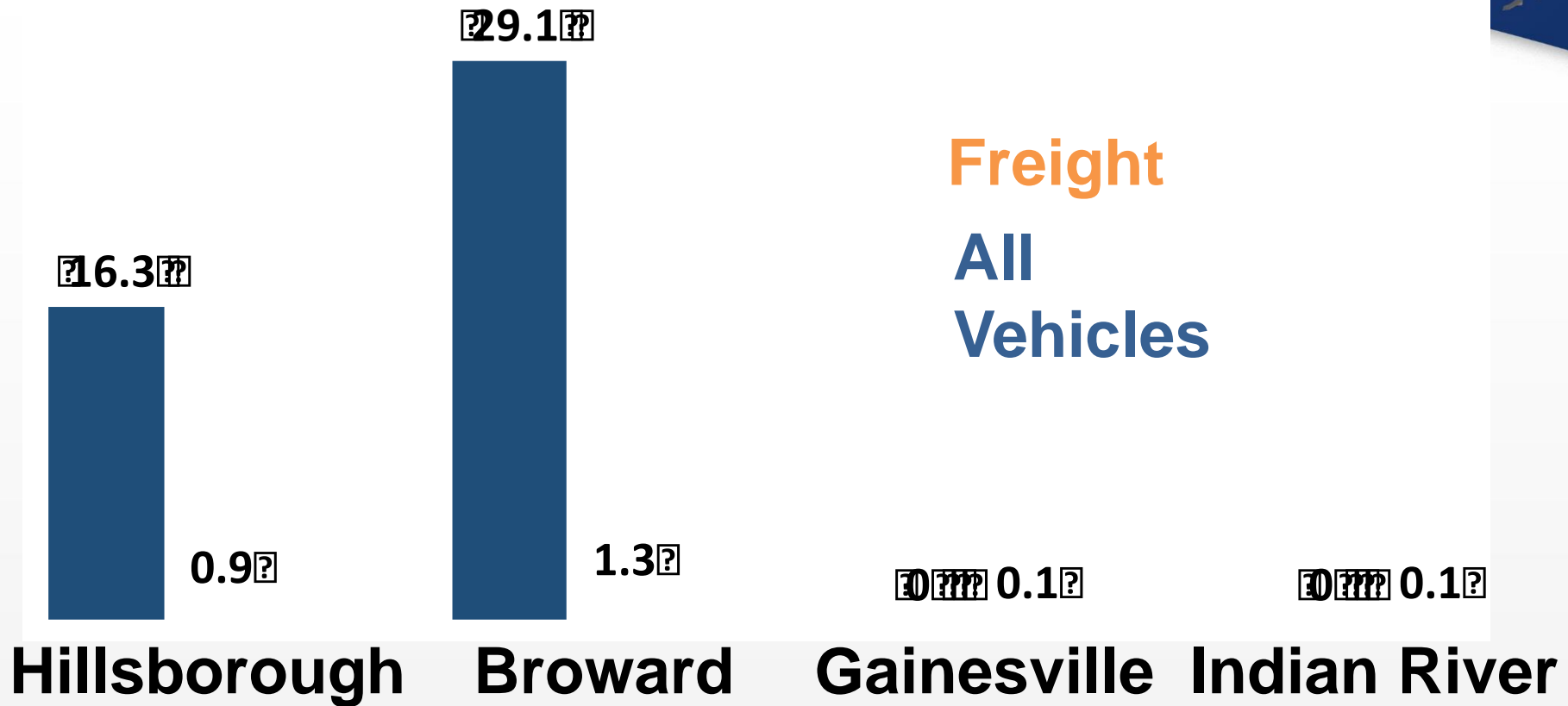


FDOT

- Supply additional measures to each MPO as MPOs agree upon through MPOAC
 - Up to 15 total
 - Up to 8 annually
 - Some measures, not annually

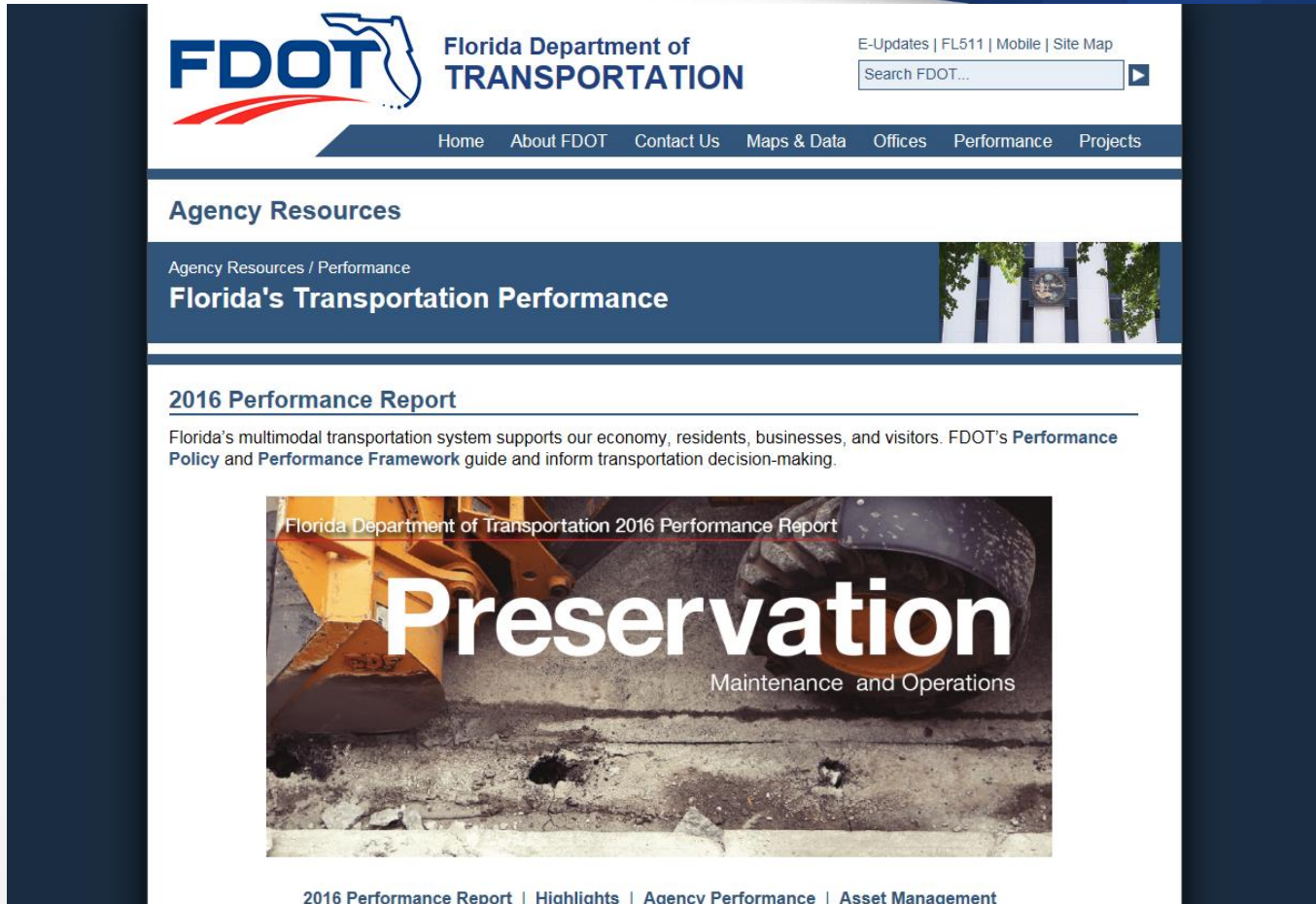
Other FDOT Mobility Measures

Daily Hours of Vehicle Delay ('000s) (Freeways Inside MPO Boundary)



Delay is difference between threshold speed (LOS B) and travel time at average speed

For More Background



The screenshot displays the FDOT website's 'Agency Resources' section, specifically the 'Florida's Transportation Performance' page. The header includes the FDOT logo, the text 'Florida Department of TRANSPORTATION', and links for 'E-Updates | FL511 | Mobile | Site Map'. A search bar is also present. The main navigation bar lists 'Home', 'About FDOT', 'Contact Us', 'Maps & Data', 'Offices', 'Performance', and 'Projects'. The 'Agency Resources' section is highlighted, with a sub-link for 'Agency Resources / Performance'. The page title is 'Florida's Transportation Performance'. Below this, the '2016 Performance Report' is featured, with a description: 'Florida's multimodal transportation system supports our economy, residents, businesses, and visitors. FDOT's Performance Policy and Performance Framework guide and inform transportation decision-making.' A large image of a road construction site with the word 'Preservation' overlaid in large white text is shown, with 'Maintenance and Operations' written below it. At the bottom, a navigation bar links to '2016 Performance Report', 'Highlights', 'Agency Performance', and 'Asset Management'.

FDOT Florida Department of TRANSPORTATION

E-Updates | FL511 | Mobile | Site Map

Search FDOT...

Home About FDOT Contact Us Maps & Data Offices Performance Projects

Agency Resources

Agency Resources / Performance

Florida's Transportation Performance

2016 Performance Report

Florida's multimodal transportation system supports our economy, residents, businesses, and visitors. FDOT's **Performance Policy** and **Performance Framework** guide and inform transportation decision-making.

Florida Department of Transportation 2016 Performance Report

Preservation

Maintenance and Operations

2016 Performance Report | Highlights | Agency Performance | Asset Management

www.dot.state.fl.us/agencyresources/performance