

WANT TO LEARN MORE?



STATE, FEDERAL & PARTNER RESOURCES



Federal Transit Administration (FTA)

<https://www.transit.dot.gov>

NYSDOT Public Transportation Bureau

<https://www.dot.ny.gov/divisions/policy-and-strategy/public-transportation>

New York Public Transit Association, Inc. (NYPTA)

<https://www.nytransit.org>

American Public Transportation Association (APTA)

<http://www.apta.com/Pages/default.aspx>

National Rural Transit Assistance Program (RTAP)

<https://www.nationalrtap.org>

DATA RESOURCES

U.S. Census Data

<https://factfinder.census.gov/faces/nav/jsf/pages/index.xhtml>

The National Transit Database

<https://www.transit.dot.gov/ntd>

U.S. Department of Labor Bureau of Labor Statistics: Transportation & Warehousing

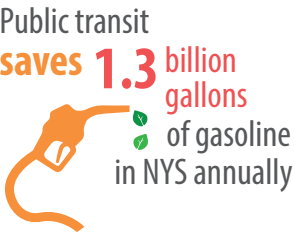
<http://www.bls.gov/iag/tgs/iag48-49.htm>

NYSAMPO
FACT SHEET
TRANSIT
www.nysmpo.org



Public Transit

FIXED ROUTE SYSTEMS



Public transit systems are vital mobility resources for millions of residents across the State of New York. Public transit systems are located within each of the 14 Metropolitan Planning Organizations in New York State, vary in size and geography covered, and include bus, train, and ferry systems.

Passenger counts also vary widely—from New York City to Kingston, and from Syracuse to Watertown. What each and every MPO has in common is that they include at least one fixed-route system in their planning and programming processes.

Source: NYPTA.

PAGE 2 What is Fixed Route Service? • PAGE 3 Where is Transit Provided? • PAGE 4 Want to Learn More?

NYSAMPO

- **NYSAMPO** is a coalition of the 14 MPOs in New York State, which have committed to work together toward common goals. NYSAMPO works collaboratively on planning and research initiatives in order to provide high-quality transportation planning expertise to the public.
 - » The **Transit Working Group** provides a forum for the exchange of transit planning-related ideas and information amongst a range of Federal, State, regional, and local agencies and transit providers.



New York State Association of Metropolitan Planning Organizations

www.nysmpo.org



www.nysmpo.org



Source: Centro.

WHAT IS FIXED ROUTE SERVICE?

According to federal regulations - Title 49, Subtitle A, Part 37, Subpart A, Section 37.3, the definition of a fixed route system is: "...a system of transporting individuals (other than by aircraft), including the provision of designated public transportation service by public entities, including but not limited to, specified public transportation service, on which a vehicle is operated along a prescribed route according to a fixed schedule."

{ FIXED ROUTE SERVICE }

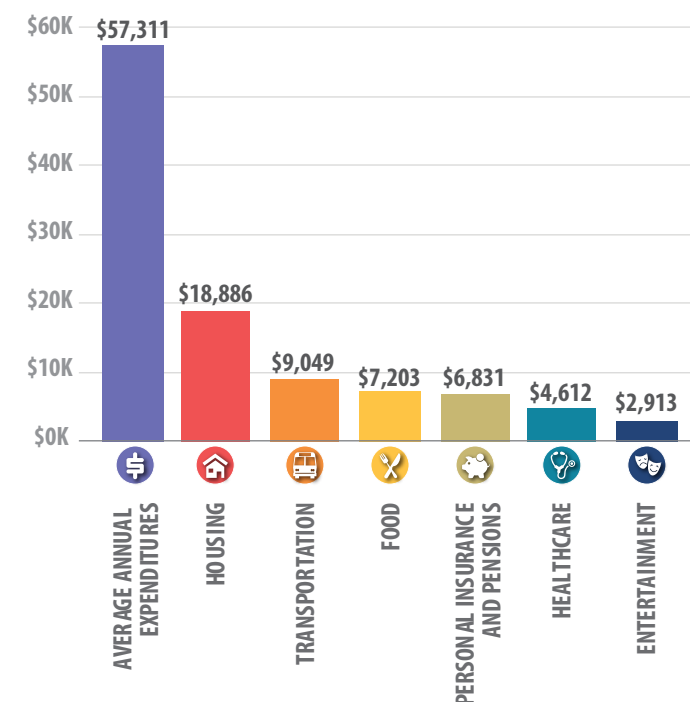
Transit service that has a fixed schedule and runs along a specific route.

{ BENEFITS OF PUBLIC TRANSIT }

Transportation is the second highest average household expenditure by spending category, according to the Bureau of Labor Statistics Consumer Expenditure Survey. Based on 2016 data, transportation accounted for just over 17 percent (or \$9,049) of household costs. Private vehicle costs (purchases, gasoline & motor oil, and other expenses) accounted for \$8,426 or 93% of the total while public transportation costs were \$623 or 7%. While the statistics may not be representative of specific areas, in general, using public transportation is much cheaper for households than owning a private vehicle.

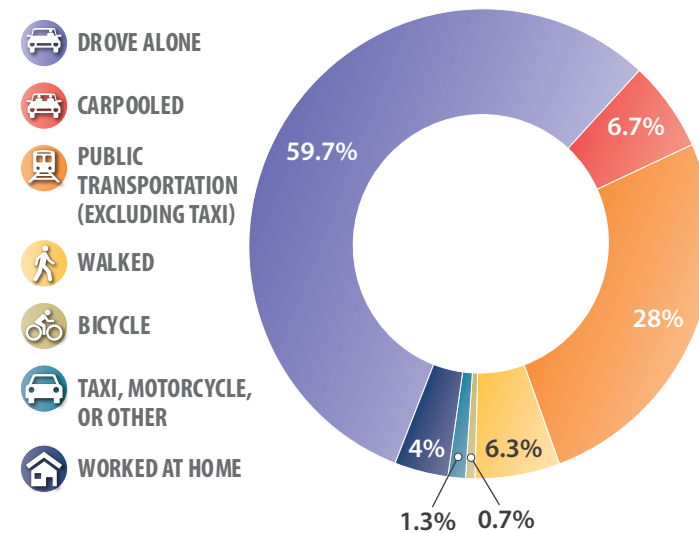
It is estimated that 2,564,874 workers 16 years and over in New York State used public transportation to commute to work in 2016 (Source: 2016 U.S. Census American Community Survey 5-year estimates). This equates to 28% of New York State workers 16 years and over. By comparison, public transportation use for commuting to work across the entire United States is just 5.1%.

AVERAGE (U.S.) CONSUMER EXPENDITURES



Sources: Mode Share—2016 U.S. Census ACS, Expenditures—U.S. Dept. of Labor BLS—Consumer Expenditures: 2016.

MODE SHARE IN NEW YORK STATE

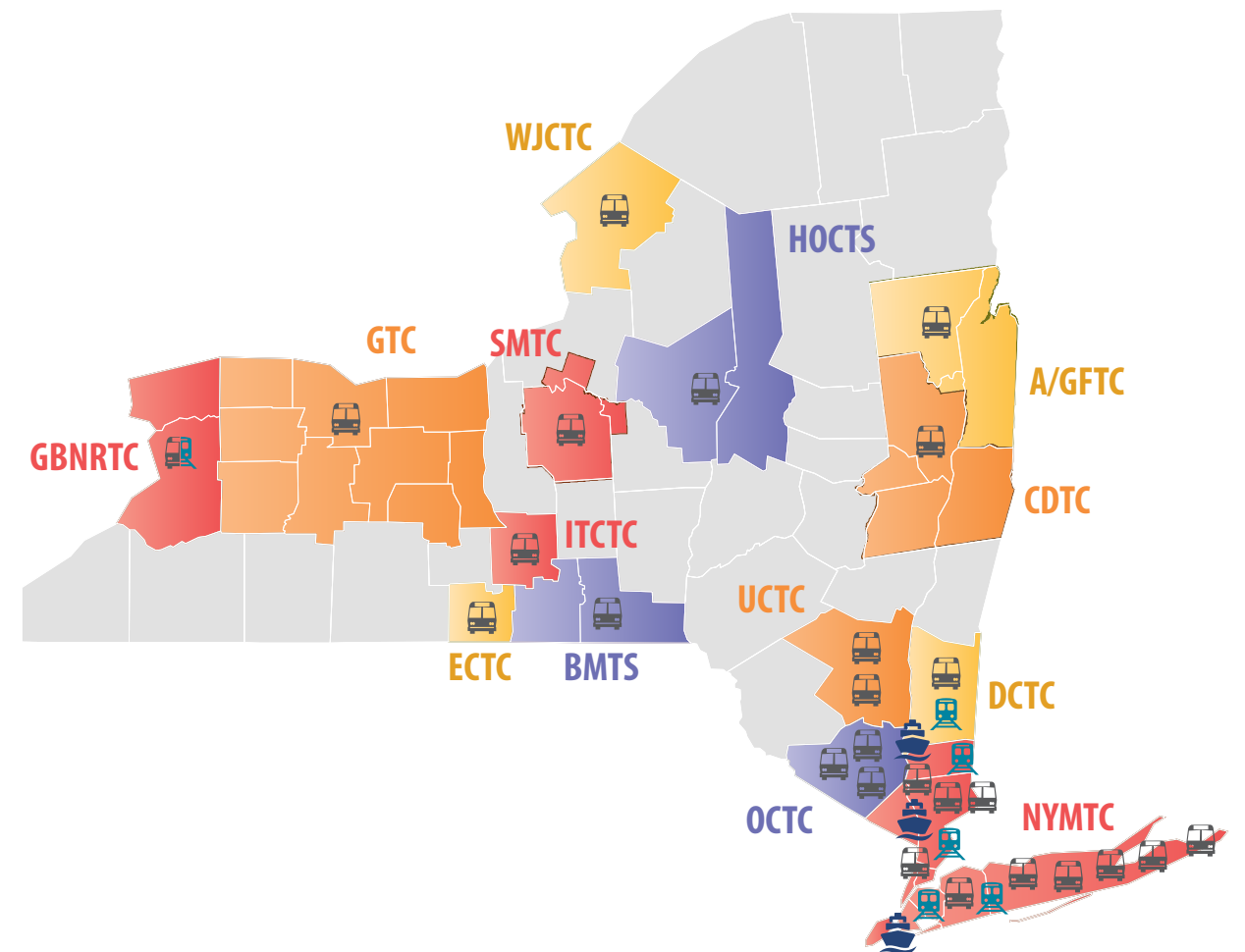


WHERE IS TRANSIT PROVIDED?

New York City has the largest transit system in the State, and one of the largest in the world by both geography covered and passengers served. Transit systems elsewhere in New York State vary in size relative to ridership served.

According to the New York Public Transit Association, Inc. (NYPTA), public transit service is provided in all 62 New York State counties.

The 14 Metropolitan Planning Organizations in New York State cover a total of 38 counties. There are 34 fixed-route service transit systems operating within MPO boundaries.



{ NEW YORK STATE RIDERSHIP TREND }

Utilizing U.S. Census data from the 2000 & 2010 Census and 2016 American Community Survey Estimates, the graph to the right clearly shows an upward trend over the last decade and a half. As a share of total work trips in New York State by workers over the age of 16, public transit use has increased from 24.4% to 28%. That is an increase of more than 550,000 additional workers taking public transit in New York State to get to work!

