



# Data Collection for ADA Transition Plans

Warren County, NY 2017



# Software

- ArcGIS Desktop
- ArcGIS Online (comes with ArcGIS Desktop)
- ArcGIS Collector (free download from Google Play or Apple App Store)





# Hardware

- Desktop computer
- Android tablet with standalone GPS.  
We used an Asus Zenpad 10 ~\$140

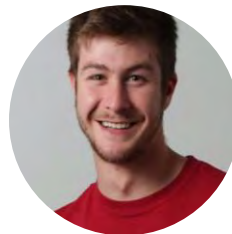




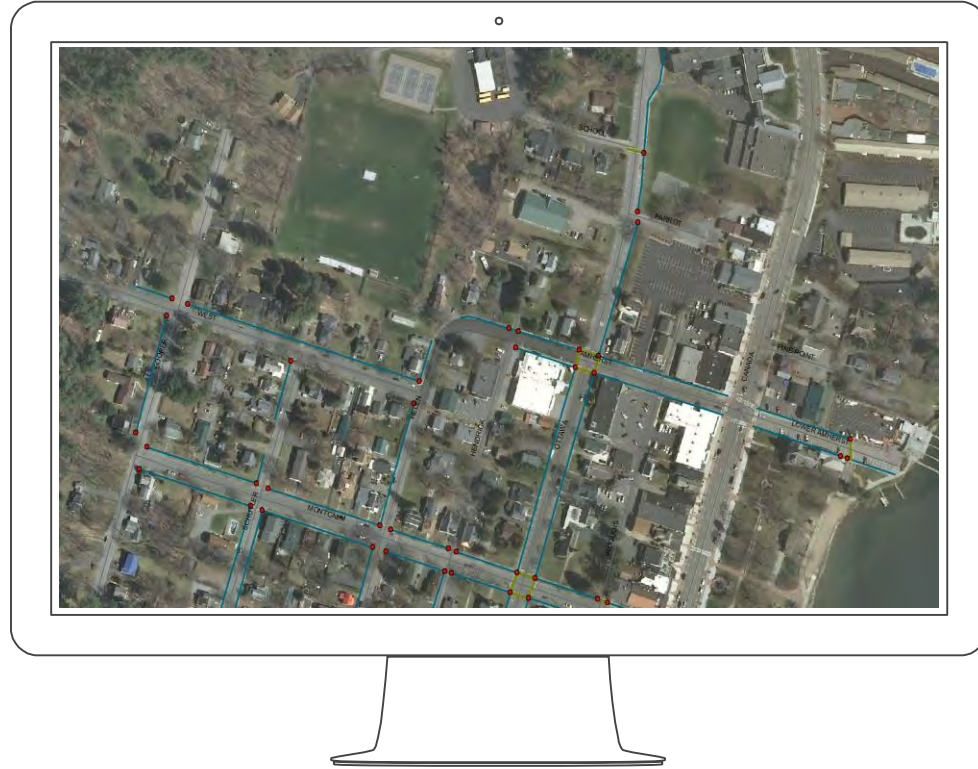
# Staff

- GIS Coordinator

- Intern  
(who has ideally taken a GIS class or two)



# in- office work





1. Digitize (trace) all sidewalk s, crosswalk s and curb ramp s in GIS
2. More accurate and faster than collect ing data with GPS in field
3. Use latest aerial photography, plus Google Streetview for reference



# Data digitized

Sidewalks **161 miles**

---

Curb Ramps **2,082**

---

Crosswalks **367**

---

23 municipalities  
**160 total hours spent**

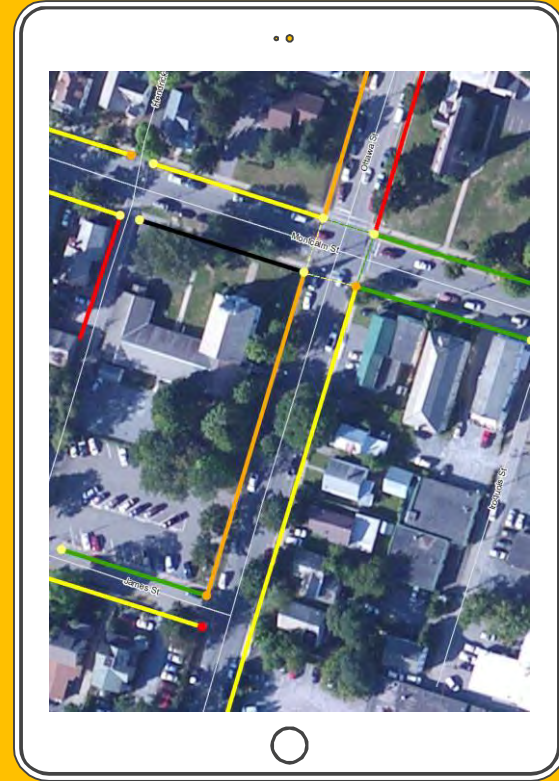


# 1 hr/mi sidewalk

average in-office data development time



# field work





1. GPS on device locates user/ feature in field
2. Select feature on map by clicking on it
3. Enter data – two fields only: rating, comments
4. Features turn color in map as soon as they are rated
5. Optionally take and add picture(s)
6. Sync when back in office or wifi





# Data field rated

Sidewalks **90 miles**

---

Curb Ramps **1,257**

---

Crosswalks **210**

22 municipalities  
**80 total hours spent**



# 53 min/mi sidewalk

average field data collection time



# Rating System

**Red**

Not accessible

**Orange**

Less accessible

**Yellow**

More accessible

**Green**

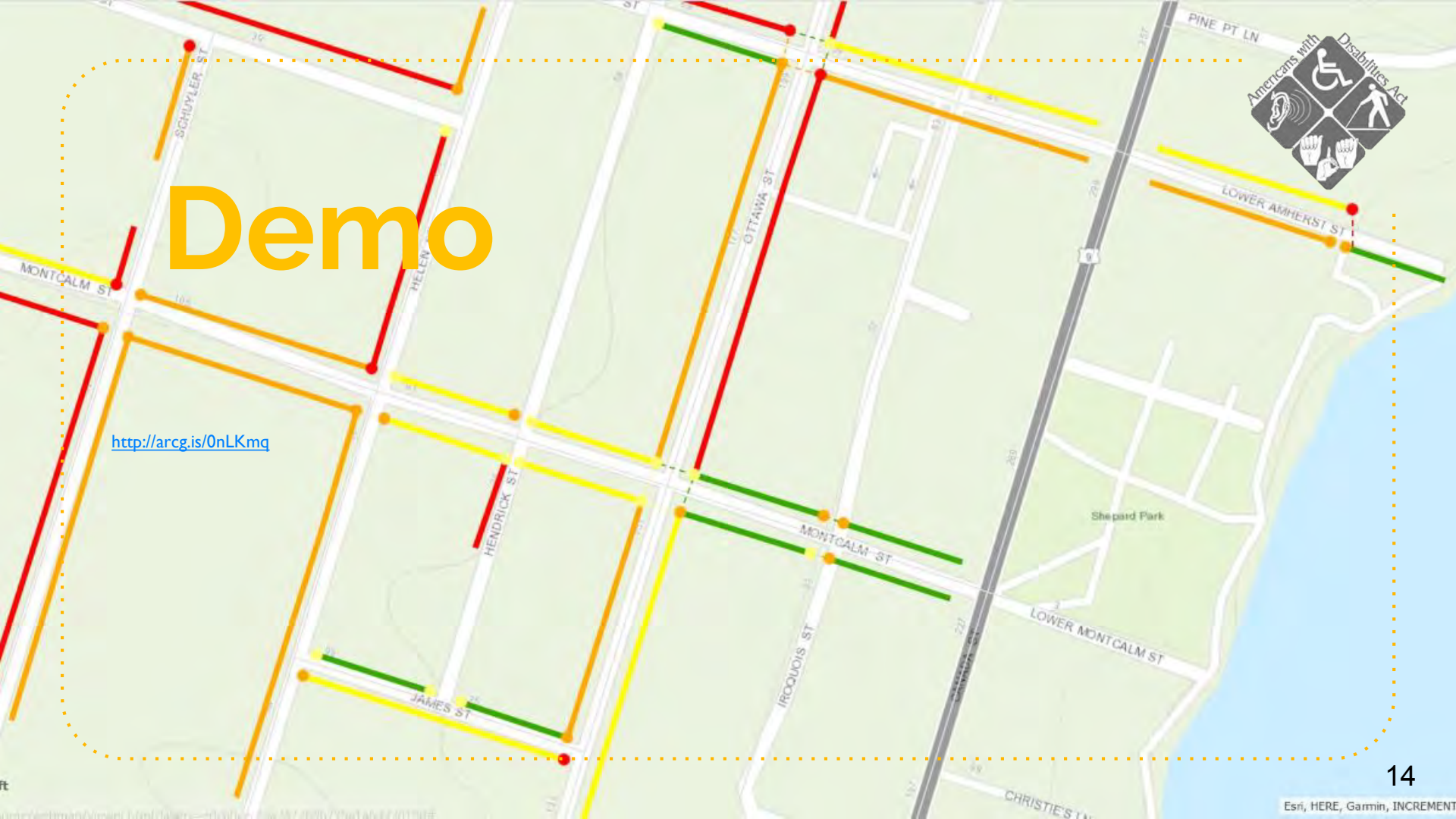
Fully accessible

<https://www.dot.ny.gov/programs/adamanagement/repository/ADA%20Transition%20Plan%20Draft%20Final%20-%20Appendix%20A.pdf>



# Demo

<http://arcg.is/0nLKmq>





# Thanks!

**Any questions?**

You can find me at [frankenfelds@warrencountyny.gov](mailto:frankenfelds@warrencountyny.gov)